

20% OFF

# HALO™

SECTIONAL MATRIX SYSTEM

## Beautiful Results In Less Time

The Halo sectional matrix system includes nitinol rings, stainless-steel matrix bands (original and firm), and easy-to-place wedges. The innovative carousel dispenser allows you to easily select the component you need, keeps your Halo system organized, and helps to prevent accidental spills. Each piece of the Halo system is designed to work together to create consistent, beautiful, naturally contoured composite restorations in less time.



STACKABLE DESIGN ALLOWS FOR USE IN MODS AND OTHER CLASS II RESTORATIONS

NITINOL RINGS MAINTAIN STRENGTH AND MEMORY OVER 1000+ USES



CONTOURS HELP ELIMINATE FLASH AND REDUCE TIME NEEDED TO FINISH AND POLISH

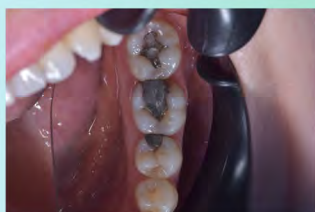
BENDABLE TAB ALLOWS FOR EASY PLACEMENT AND REMOVAL WITH INCREASED VISIBILITY



OCCUSAL CURVE HELPS ACHIEVE THE CORRECT SHAPE FASTER



ANATOMICALLY SHAPED BANDS REDUCE TIME SPENT SHAPING AND FINISHING



Before restoration



Halo™ Metal Matrix and Wedge Placed



Halo™ matrix showing good adaptation to tooth margin



After

The easy-to-use Halo sectional matrix system is designed to help you to create beautiful, anatomically contoured composite restorations in less time.

## Jiffy™ spin

SHAPING AND FINISHING DISKS

### RAPID, EFFICIENT SHAPING AND FINISHING

Ultra-thin disks range from coarse to fine, with an aluminum oxide coating. The Extra-coarse disk with a diamond grit is for even faster removal, so that the transition to finer grits puts that extra flourish on your finish. This set puts a shine on both composite and ceramic materials, and provides the long-lasting shine expected of the Jiffy™ product line.



**BUY 4  
GET 1 FREE  
(REFILLS ONLY)**



**ULTRA-ETCH™**

THE ART OF

### PRECISE PLACEMENT

There is a reason why Ultra-Etch etchant has been an industry leader for over 30 years. The gel stays exactly where you place it and the superior proprietary chemistry creates an optimal surface to receive resin with Ultra-Etch etchant, selective etching is a breeze and when you're done, the gel rinses cleanly and completely. The Indispense Syringe for Ultra-Etch is available in 30ml to provide economic value for the practitioner.

**15% OFF**  
INDISPENSE SYRINGE  
#685 #383



# OPALESCENCE WHITENING SPECIALS



**30% OFF**

**Opalescence™ Go™**  
Prefilled Whitening Trays

Opalescence Go teeth whitening gel contains PF (potassium nitrate and fluoride).

- 6% - wear 60–90 minutes for 5–10 days
- 10% - wear 30–60 minutes for 5–10 days
- 15% - wear 15–20 minutes for 5–10 days



**30% OFF**

**Opalescence™ PF**  
Carbamide Peroxide with Potassium Nitrate and Fluoride

With its easy syringe delivery, Opalescence PF whitening gel is easily customizable for each patient's individual situation. For use with customized take-home whitening trays, Opalescence PF tooth whitening gel offers many options for patients.



**10% OFF**

**Opalescence™ Boost™**  
In-Office Power Whitener

Award-winning Opalescence Boost in-office teeth whitening gel. With just two or three 20-minute treatments its powerful 40% hydrogen peroxide formula provides instant results.



**LIGHTS**

They're shiny and fun, but unfortunately the benefit stops there. They're often used as a supplement to actual whitening because it's a trend that can be capitalized on.



**DEHYDRATION**

When your teeth dry out, they appear whiter. However, beware of treatments using UV radiation or light. Rocks, bones, and clean sheets may turn white from the UV rays of the sun—but it can also cause burns and other damage to the tissues in your mouth.



**SHADE RELAPSE**

When teeth remoisturize after whitening, shade relapse can occur. But if the makers of your whitening product have taken that into account, your whitening should have a high water content to minimize dehydration.



**STAINING**

Lights, acids such as lemon juice, swishing with hydrogen peroxide, and charcoal can all have dubious effects if used wrong.